



**REGIONAL SPECIALISED METEOROLOGICAL CENTRE-TROPICAL CYCLONES, NEW DELHI
TROPICAL WEATHER OUTLOOK**

DEMS-RSMC SPECIAL TROPICAL CYCLONES NEW DELHI DATED 10.12.2022

TROPICAL WEATHER OUTLOOK FOR NORTH INDIAN OCEAN (THE BAY OF BENGAL AND THE ARABIAN SEA) VALID FOR NEXT 120 HOURS ISSUED AT 0900 UTC OF 10.12.2022 BASED ON 0600 UTC OF 10.12.2022.

BAY OF BENGAL:

THE DEEP DEPRESSION (REMNANT OF THE CYCLONIC STORM "MANDOUS" PRONOUNCED AS "MAN-DOUS") OVER NORTH TAMIL NADU MOVED NEARLY WEST-SOUTHWESTWARDS WITH A SPEED OF 09 KMPH DURING PAST 06 HOURS, WEAKENED INTO DEPRESSION AND LAY CENTRED AT 0300 UTC OF TODAY, THE 10TH DEC, OVER NORTH TAMIL NADU NEAR LATITUDE 12.7°N AND LONGITUDE 79.3°E, ABOUT 30 KM SOUTH-SOUTHWEST OF VELLORE AND 120 KM EAST-NORTHEAST OF KRISHNAGIRI. IT IS VERY LIKELY TO MOVE NEARLY WEST-SOUTHWESTWARDS AND GRADUALLY WEAKEN INTO A WELL MARKED LOW PRESSURE AREA DURING NEXT 12 HOURS.

AS PER INSAT 3D IMAGARY CLOUDS ASSOCIATED WITH DEPRESSION IS BROKEN LOW AND MEDIUM CLOUDS WITH EMBEDDED INTENSE TO VERY INTENSE CONVECTION OVER NORTHEAST TAMIL NADU, SOUTH COSTAL ANDHRA PRADESH, RAYALASEEMA AND SOUTHEAST SOUTH INTERIOR KARNATAKA (MINIMUM CTT MINUS 93 DEG C).

SCATTERED LOW AND MEDIUM CLOUDS WITH EMBEDDED MODERATE TO INTENSE CONVECTION OVER WESTCENTRAL & SOUTHWESTBAY OF BENGAL SOUTH ANDAMAN SEA.

PROBABILITY OF CYCLOGENESIS (FORMATION OF DEPRESSION) DURING NEXT 120 HRS:

24 HOURS	24-48 HOURS	48-72 HOURS	72-96 HOURS	96-120 HOURS
HIGH	NIL	NIL	NIL	NIL

ARABIAN SEA:

SCATTERED LOW AND MEDIUM CLOUDS WITH EMBEDDED INTENSE TO VERY INTENSE CONVECTION OVER SOUTH ARABIAN SEA COMORIN AREA AND ARABIAN SEA BET LAT 3.0N TO 10.0N LONG 53.0E TO 82.0E AND ISOLATED WEAK TO MODERATE CONVECTION OVER CENTRAL ARABIAN SEA.

PROBABILITY OF CYCLOGENESIS (FORMATION OF DEPRESSION) DURING NEXT 120 HRS:

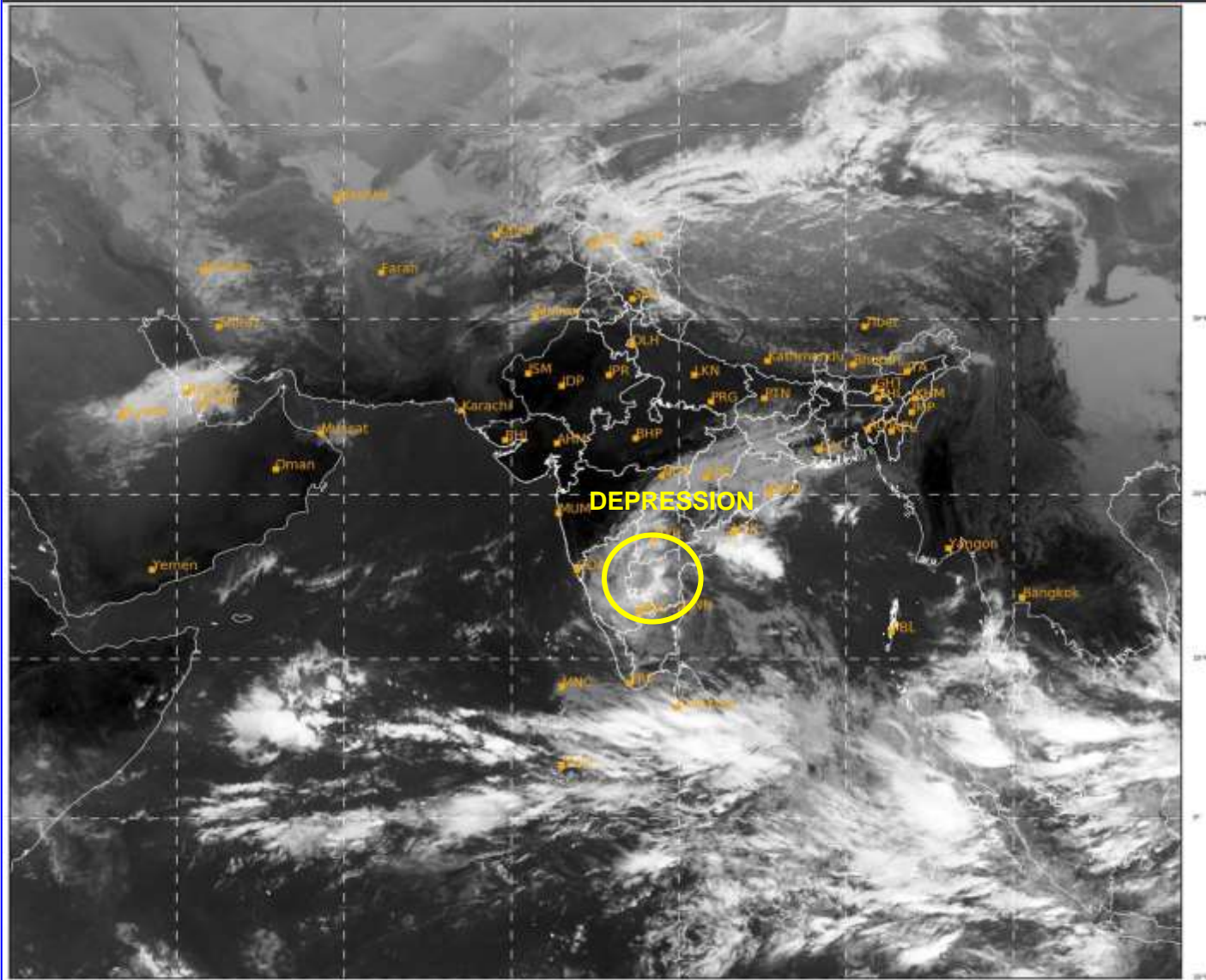
24 HOURS	24-48 HOURS	48-72 HOURS	72-96 HOURS	96-120 HOURS
NIL	NIL	NIL	NIL	NIL

Remarks:

NIL

SAT : INSAT-3D IMG
IMG_TIR1 10.8 um
LIC Mercator

10-12-2022/(0600 to 0627) GMT
10-12-2022/(1130 to 1157) IST



448

939

IMD, DELHI

Cloud distribution: (a) Isolated: <25%, Scattered:25-50%, Broken: 51-75%, Solid:>75%, Convection Intensity: (a) Weak: Cloud Top Temperature (CTT) >-25°C, (b) Moderate: CTT: - 25°C to -40°C, (c) Intense: CTT: - 41°C to -70°C and (d) Very Intense: : Less than -70°C
PROBABILITY OF CYCLOGENESIS (FORMATION OF DEPRESSION): NIL: 0%, LOW: 1-33%, , MODERATE: 34-66% AND HIGH: 67-100%
This is a guidance Bulletin for WMO/ESCAP Panel Member countries. Visit respective National websites for Country specific Bulletins